

PANELS

People Centricity

Loving one's job is no longer a luxury. Employees increasingly champion their sense of humanity and purpose in the workplace. Hospitality is perhaps one of the most human-centric industries, and ironically, is traditionally known for providing intensive work that does not meet the labor market's current demands.

The rising power of purpose presents a stunning opportunity: To create an earnest cohesion between the Hospitality industry's inherent humanism and its actual labor practices.

During this panel, we will hear from Hospitality companies embracing this opportunity. Discover the construction and upkeep of a people-centric company culture, and its renovation amidst a storm.



Date
March 13-15



Time
Refer to Our Website



Location
EHL campus

Continuous Learning

Business success is rarely a graceful leap to the top. The real journey is populated with stumbling blocks, hidden traps, and long uphill climbs. Against these obstacles, we are taught to prevail. But what happens when, inevitably, we fail? In this panel, the value of failure as an open door to learning, growth, and, ultimately, endurance, will be discovered.

Technology Elevation

Hoteliers today face a rich offering of technological tools. Early adopters are already shifting from constructing their tech strategy to refining it, while other hoteliers still hesitate to take a seat at the tech table. This panel will discuss both: The most riveting innovations by today's hotel tech leaders as well as the disparate implementation of technology within the hotel industry.



MODERATOR: Dr. Sowon Kim
Professor of Leadership & Intercultural Management at EHL



Dr. Yves Givel
Senior Vice President Human Resources of EMEA & Southwest Asia at Hyatt Hotels Corporation



MODERATOR: Dr. Demian Hodari
Professor of Strategic Management at EHL



MODERATOR: Ian Millar
Senior Lecturer at EHL Hospitality Business School



Floor Bleeker
Chief Technology Officer at Accor



Philippe Roux-Dessarps
Regional Vice President & GM at Four Seasons Hotels and Resorts



Xenia zu Hohenlohe
Co-Founding Partner & CSO at Considerate Group



Michael Levie
Co-Founder of CitizenM & KUBE Ventures



Dr. Achim Schmitt
Professor & Associate Dean at EHL Graduate School



Phil Le-Brun
AWS Enterprise Strategist at Amazon



Carlo Fontana
General Manager at Hotel Lugano Dante



Presenting Partners



Premium Partners



Supporting Partner



Product Partners



Human Connectivity

Food and Lodging form the bedrock of the traditional hospitality industry. Both of these are now available at the click of a button, without the need to interact with anyone. But where does that leave Hospitality, an industry built on human interaction?

What appears as a threat reveals exactly where hospitality remains relevant, as the unique provider of person-to-person experiences while the rest of the world has moved largely behind screens. Today, people desire authentic human connection. With social interaction as our industry's updated unique value proposition, how do we construct a corresponding winning strategy? Throughout this discussion, the future of hospitality as a platform to socially connect will be analyzed, and new directions of experiences will be explored.



MODERATOR:
Dr. Meng-Mei Maggie Chen

Professor of Marketing
at EHL Hospitality Business School



Ian Wilson

Hospitality Director
at NEOM



Anita Mendiratta

Founder & President
at Anita Mendiratta & Associates



Marloes Knippenberg

CEO
at Kerten Hospitality



Tim Weiland

General Manager
at Alpina Gstaad



Tania Lopes Silva

Director of German National Sales
at Marriott International



Lukas Peter

Revenue Director
at Soho House London



Mélanie Burnier

Co-President of Coworking Switzerland
& Founder of The Work Hub



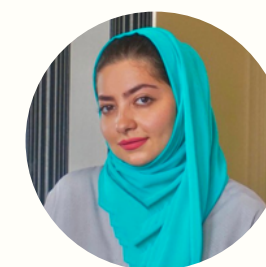
Adrian Flück

Director
at Invesco EMEA



Andreas Ewald

Managing Partner
at Engel & Volkers



Aseel Bondagjy

Hotel Talent Development Lead
at NEOM



Juliet Kinsman

Sustainability Editor
at Condé Nast Traveller

Get your tickets here



More information here



Online streaming



Enter the raffle for the Gala dinner at Royal Savoy! (Only applicable for a 3-day pass)

KEYNOTES



Dr. Estelle Dinh

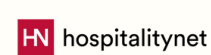
Professor at International University of Monaco & CEO of Attixs Global Collection



Dr. Carole Ackermann

President
of EHL

Media
Partners



@yhsglobal



@Young Hospitality Summit (YHS)



<https://www.yhsglobal.com/>



@YoungHospitalitySummit